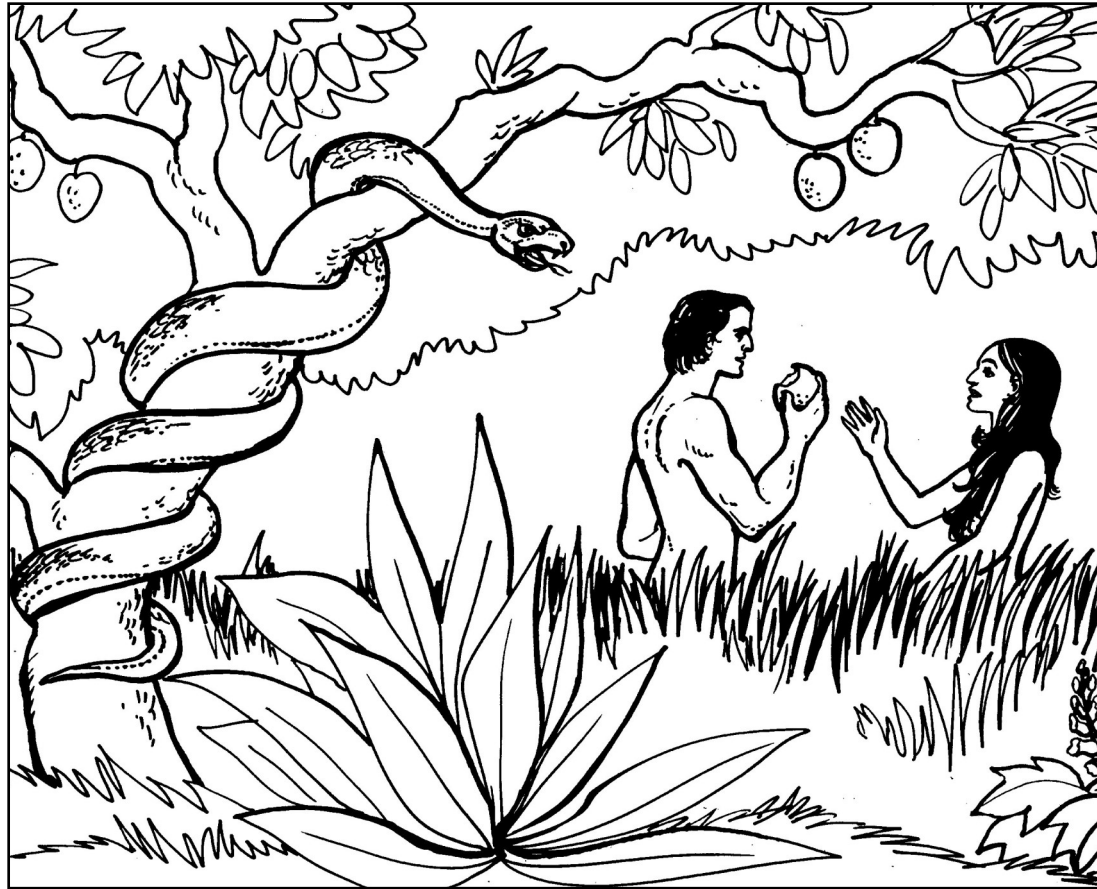


Yulubi Singena

Taruxuni ito kelixi Alaa Kitabun nan kui

Dunupa Fala Sora 2 han Sora 3





© Bible Visuals International Inc

Alatala yi adaman da a yete misaala ra.
A e da xemen nun naxanla. E xili nen
Adama e nun Nmahawa.

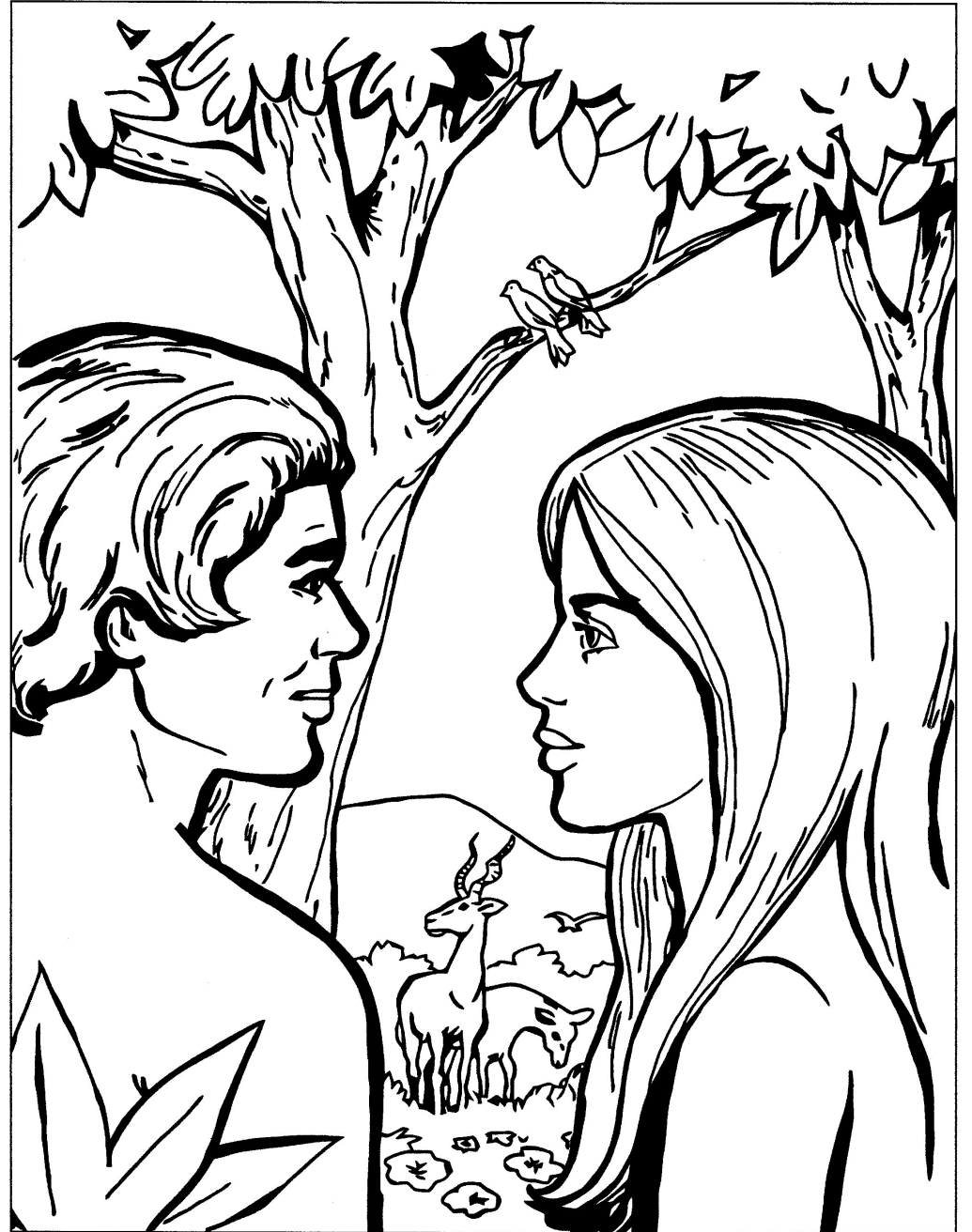
Marigina Alatala yi nako fadin nafala,
naxan xili Eden. A yi adaman doko
menni, alogo adaman xa na yiren
nawali, a yi a kantan.

Wudin naxanye nanyi, e tofan,
e bogin fan.

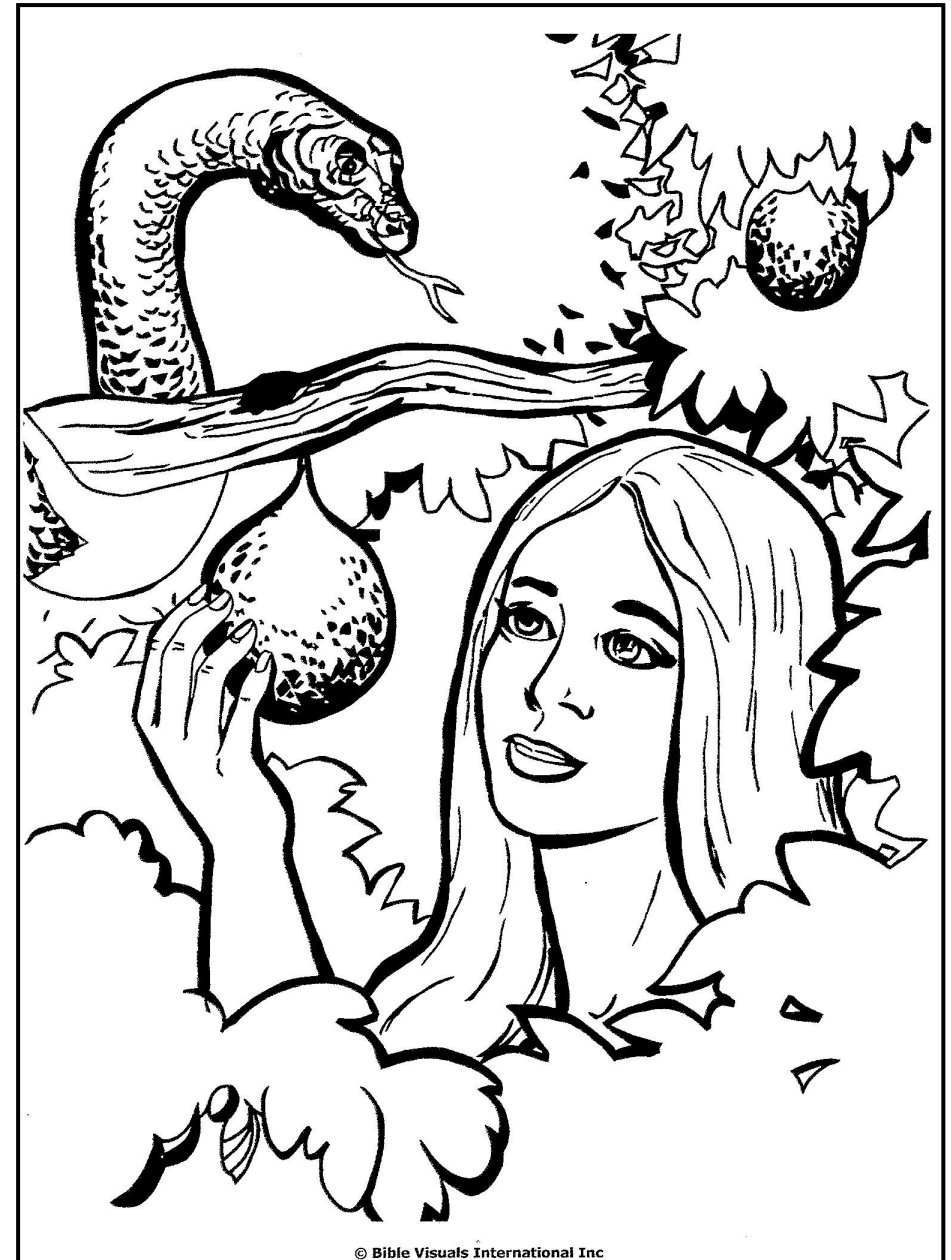
Hali Ala yati yi sigan tima na yiren nin.

Marigina Alatala yi yamarin so Adama yi, a naxa, “I nɛ wudin bogin birin donɛ, fɔ keden pe. Wudin naxan xili ‘fe faɗin nun fe naxin kolon wudina,’ i nama na bogin don.”

“I na a don, i faxama nɛn.”

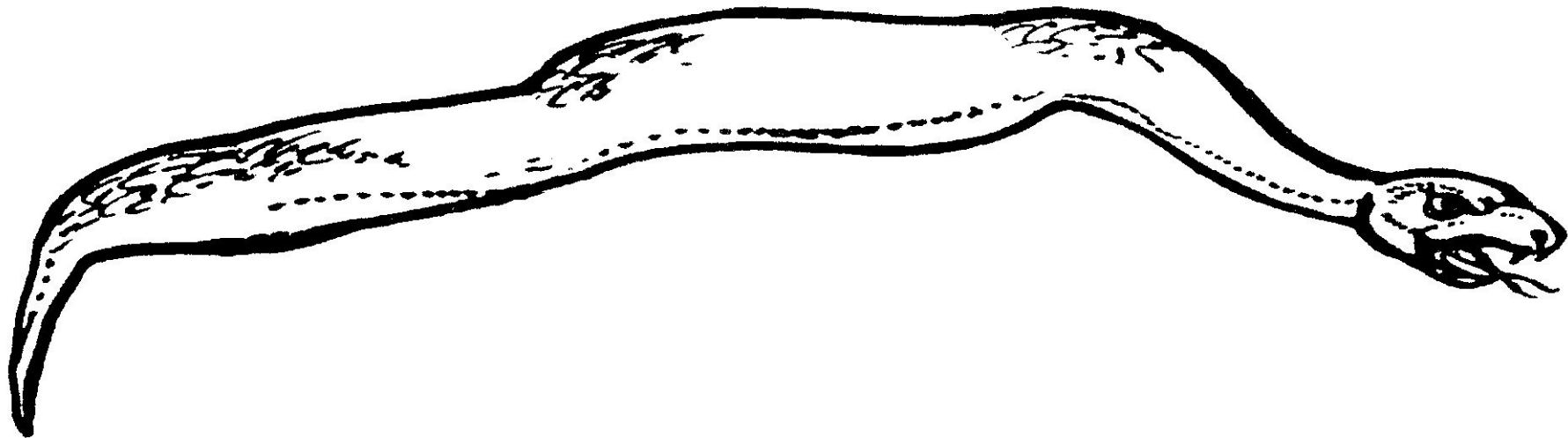


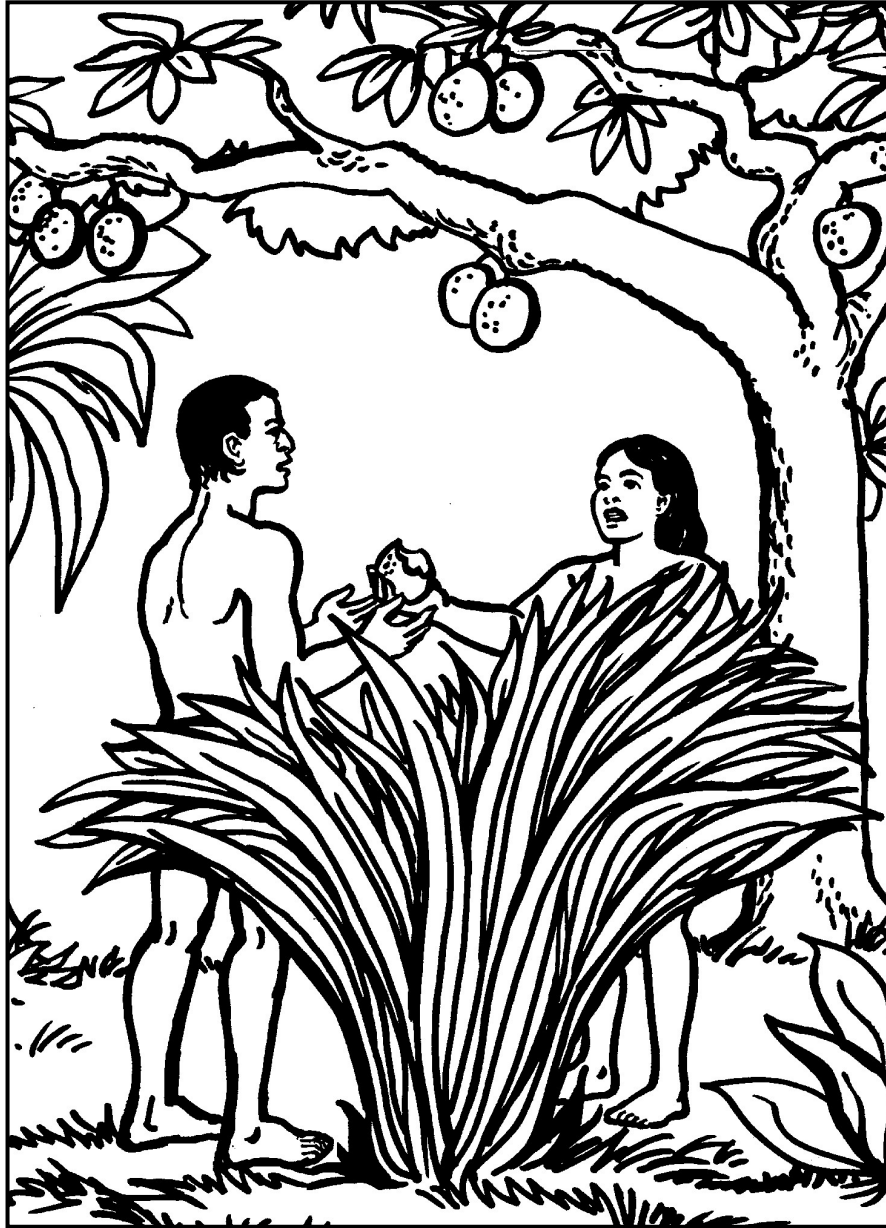
Լօժոնա nde, sajin yi fa Nmahawa
fema, a madaxudeni. A yi a fala
Nmahawa xa, a naxa, “Wudini ito,
Ala naxan falaxi i nama a don,
a bogina i rakotama nen alo Ala
yetenā. A don. I mi faxama.”



© Bible Visuals International Inc

Sajin bata wulen xeε. A mi waxi Nmahawa xa Alaa falan suxu.
Setana mi waxi muxu yo xa bira Ala fɔxo ra.





© GRN

Nmahawa yi a kolon fa fala Ala bata
tɔnna dɔxɔ, a a nama na wudin bogin
don. Koni a yi a tuli mati saɓin na.

Nmahawa to wudi bogin mato, a tofan,
a fan donseen na, a fan xaxili soɔ
seen na, a don xɔnla yi a suxu han a
bata a tongo, a yi a don.

A yi nde tongo, a sa a so Adama yii,
naxan yi a fema. A fan yi a don.

Na xanbi ra, e yi Marigina Alatala sigati xuiin name nakɔni. Nayi, e bata yagi e sɔnna ra, e yi e luxun. Ala naxa, “Adama, i minɛn yi?”

Adama yi a ratin, a naxa, “N bata gaxu bayo n magenla na a ra. Nanara n bata n luxun.”

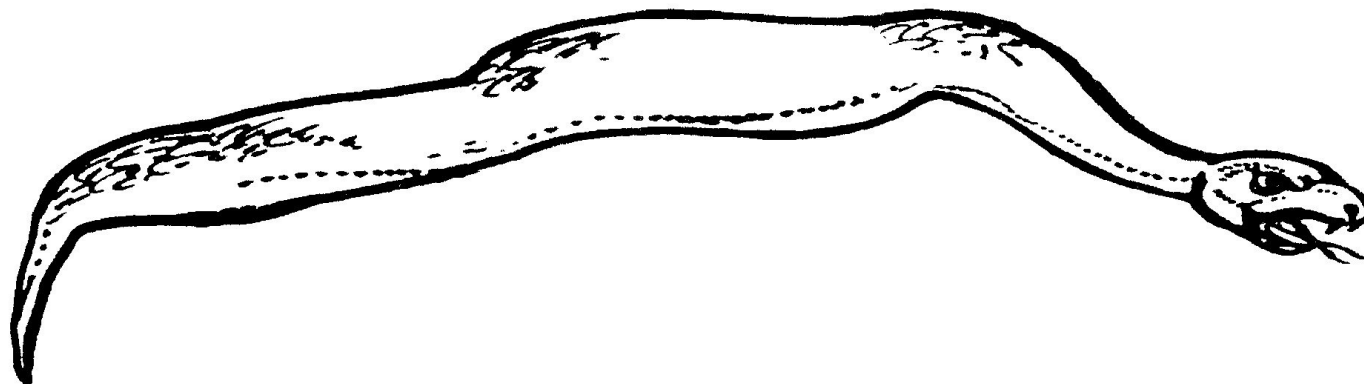
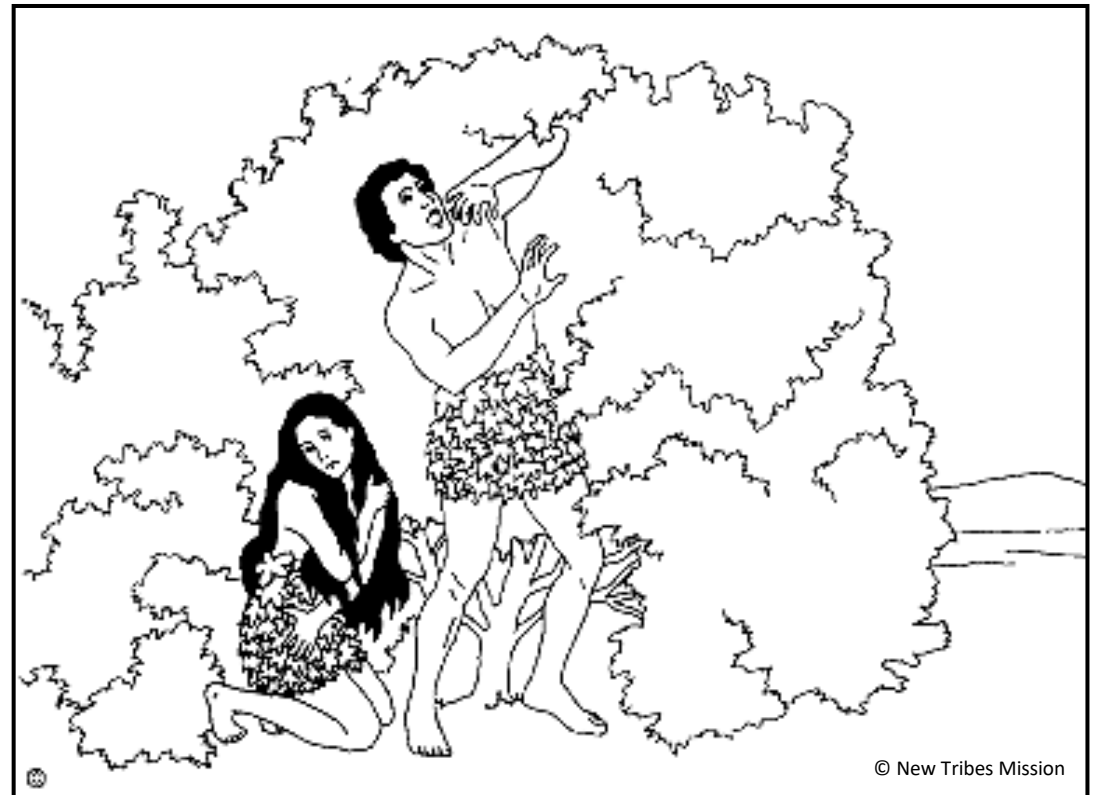
Ala mi sɛwaxi bayo e mi a falan suxi.

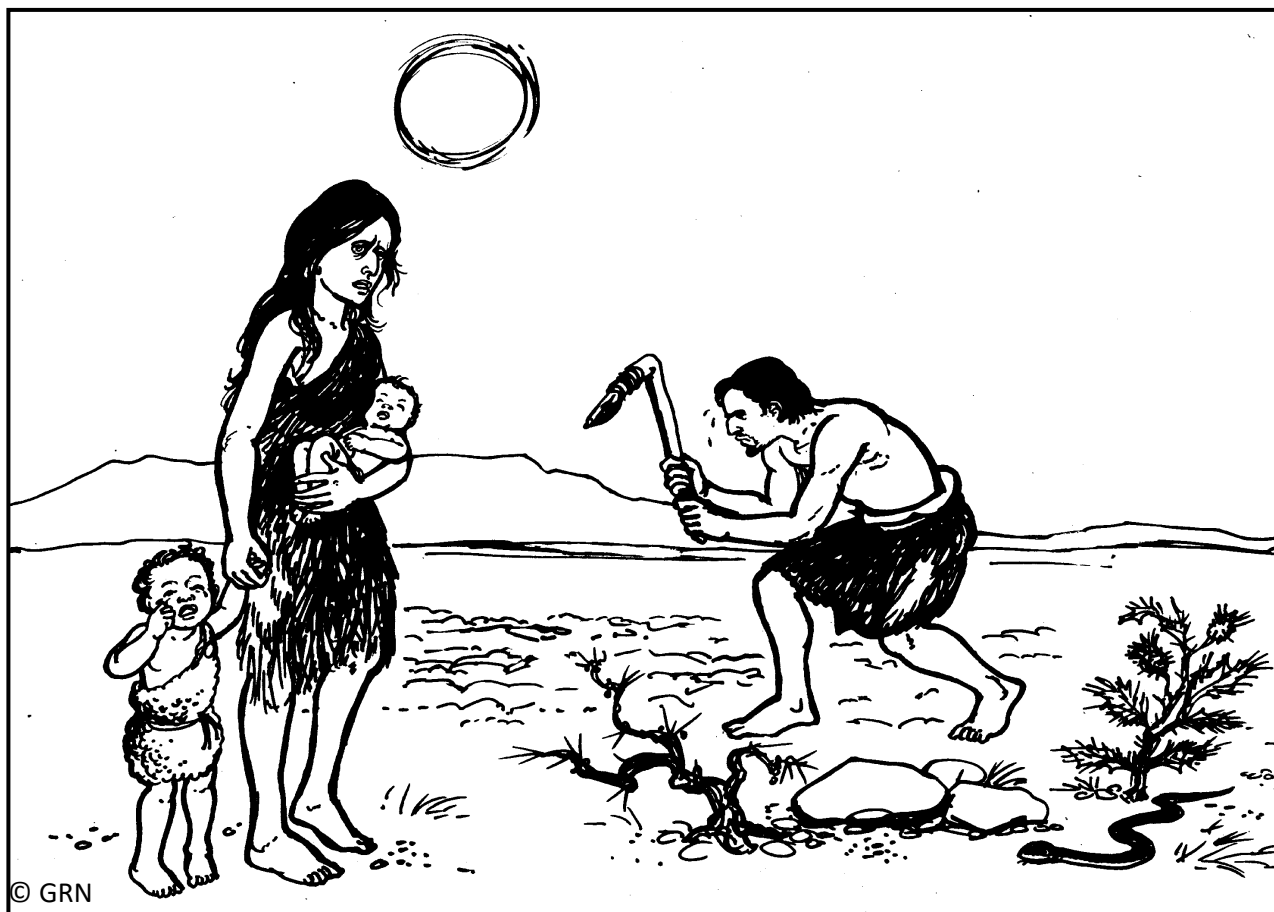


© Bible Visuals International Inc

Nayi, Ala yi tɔɔyaan nafa e ma.

Sajin dangaxi ikiini, fa fala,
a findima bubuseen nan na a
kuiin xun na.





Nmahawa tɔɔma nen a dii barideni.

Adamaa tɔɔn ni ito ra — Ala bata bɔxɔn danga a fe ra. Xɛ bi wanla bata xɔdɔxɔ. Adama tɔɔma nen a balo sɔtɔdeni.

E nun, adaman birin faxama nen.

Ala bata Adama nun Nmahawa ramini
Eden nakoni.

Koni hali na, e yi rafan Ala ma.

Ala yi e yagi feen luxun.

Ala yi e yisuxu.

Han to, en birin nafan Ala ma.

En na a falan suxu ken!



© GRN

Crée par la Mission Protestante MCA

République de la Guinée

Juillet 2023

Les images sont de Gospel Recordings (© GRN)

© Bible Visuals International

Avec permission

Et de © New Tribes Mission